



March 24, 2021

Dear Parents and Families:

Hunterdon County has moved back into the **High Covid Activity (Orange)**. This has changed the exclusion criteria for in person attendance.

***What this means for you:***

- **If positive for COVID-19**, 10 days quarantine from test date and improvement of symptoms.
- **If considered a close contact** of a COVID positive, a 14 day quarantine is mandatory from the date of last contact.
- **Symptomatic individuals** must quarantine for 10 days from onset of COVID like symptoms. If you wish to return to school prior to the 10-day period of isolation, we will require a negative COVID-19 test to be provided to the health office.
- **Any travel** will require a 10 day quarantine from the date of return to NJ.
- Report any symptoms. Two or more symptoms and your child stays home. Siblings stay home until proof of a negative test from the ill individual.
- Call the attendance line for any absence or switch to virtual including a reason. Reasons that will be accepted for a switch to virtual include: illness, presence of symptoms, or quarantine. Any other reason stated may not be accepted.

The COVID screening form is to be completed every day of in person instruction. Any symptoms that are COVID-19 compatible must be reported to the office on days when the child is NOT in school.

The daily pre-screening form is mandatory: Please complete by 8:00 AM for TBS.

**NJDOH recommends** that students and staff with the following symptoms be promptly isolated from others and excluded from school.

- **At least two** of the following symptoms: fever (measure or subjective), chills, rigors (shivers), myalgia (muscle aches), headache, sore throat, nausea or vomiting, diarrhea, fatigue, congestion or runny nose;

**OR**

- **At least one** of the following symptoms: cough, shortness of breath, difficulty breathing, new olfactory disorder, new taste disorder.

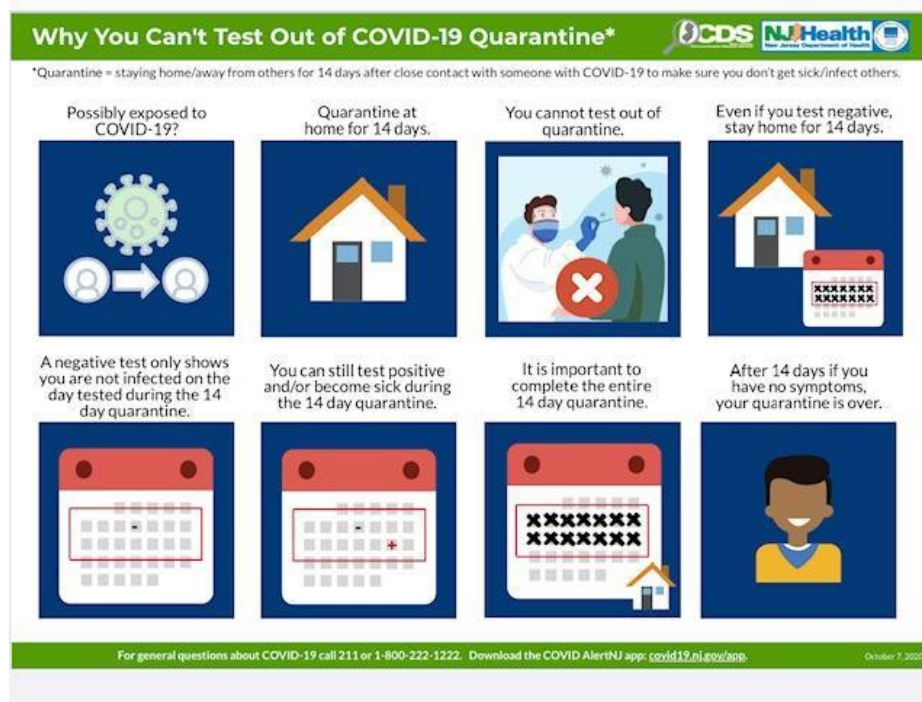
This infographic explains that those who are close contacts of a positive case and need to quarantine **cannot "test out" of quarantine**. **If a student is exposed they need to quarantine for 14 days.** **The NJ Travel Advisory** is strongly discouraging any non-essential travel at this time to any state on the advisory list. Individuals traveling to

states on the advisory list are advised to self-quarantine for 10 days. **The district will be enforcing the 10-day quarantine for travel** outside NJ. This includes travel by train, bus, car, plane and any other methods of transportation.

Here's the NJ211 info: <https://www.nj211.org/coronavirus-covid-19>

To access the Hunterdon County COVID Dashboard, please [Hunterdon Dashboard](#).  
Here is Hunterdon County Department of Health contact # 908-788-1351

**Thank you in advance,  
The Readington Township School Nurses**



To access the COVID-19 Activity Level Report, please [Weekly reports](#)